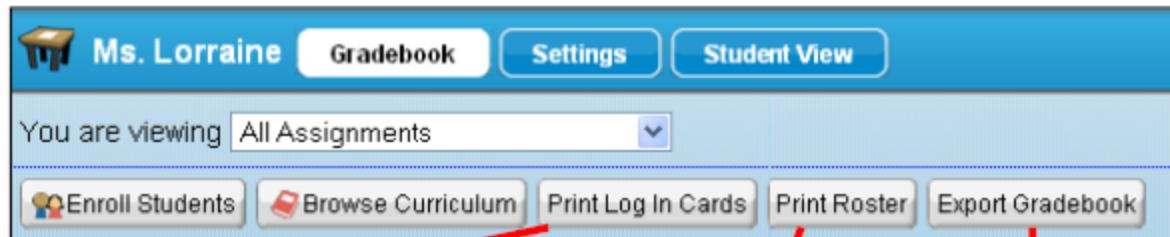


Classes: Login Cards, Roster and Exporting Gradebook Files



The **Print Log In Cards** button provide log-in cards for your students:

The 'Login Cards' page displays a grid of student login information. Each card includes a student's name, username, password, and class. The cards are organized into two columns and four rows.

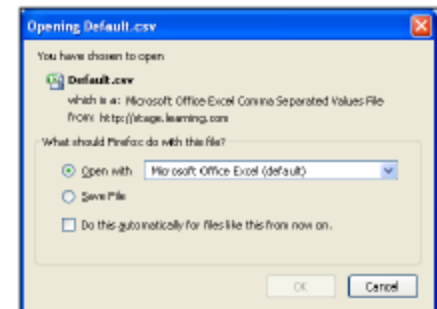
Student Name	Username	Password	Class
Apple, Anna	apple.anna	apple.anna	PC1 - Internal
Brown, Bob	brown.bob	brown.bob	PC1 - Internal
Clark, David	clark.david	clark.david	PC1 - Internal
De La Fontaine, David	de.la.fontaine.david	de.la.fontaine.david	PC1 - Internal
Edwards, John	edwards.john	edwards.john	PC1 - Internal
Farrell, David	farrell.david	farrell.david	PC1 - Internal
Gordon, Gordon	gordon.gordon	gordon.gordon	PC1 - Internal
Hoffman, David	hoffman.david	hoffman.david	PC1 - Internal

The **Print Roster** button gives you a printable page of your class list, including Usernames and Passwords:

The 'Class Roster' page displays a table of student information. The table includes columns for Student Name, Username, Password, and Class. The data is organized into two columns and four rows.

Student Name	Username	Password	Class
Apple, Anna	apple.anna	apple.anna	PC1 - Internal
Brown, Bob	brown.bob	brown.bob	PC1 - Internal
Clark, David	clark.david	clark.david	PC1 - Internal
De La Fontaine, David	de.la.fontaine.david	de.la.fontaine.david	PC1 - Internal
Edwards, John	edwards.john	edwards.john	PC1 - Internal
Farrell, David	farrell.david	farrell.david	PC1 - Internal
Gordon, Gordon	gordon.gordon	gordon.gordon	PC1 - Internal
Hoffman, David	hoffman.david	hoffman.david	PC1 - Internal

Export Gradebook enables you to export your Gradebook into another file type.



Classes: Login Cards, Roster and Exporting Gradebook Files

How to change student passwords

Student passwords are changed by the teacher. Students do not have the capability to change their own passwords in the system.

Teachers are encouraged to change the student passwords to something more secure, such as student ID # or anything that the student suggests.